

Chapter Seven

Illustrations

Rossi et. al. Evaluation

EXHIBIT 7-A

ILLUSTRATION OF BIAS IN THE ESTIMATE OF A PROGRAM EFFECT

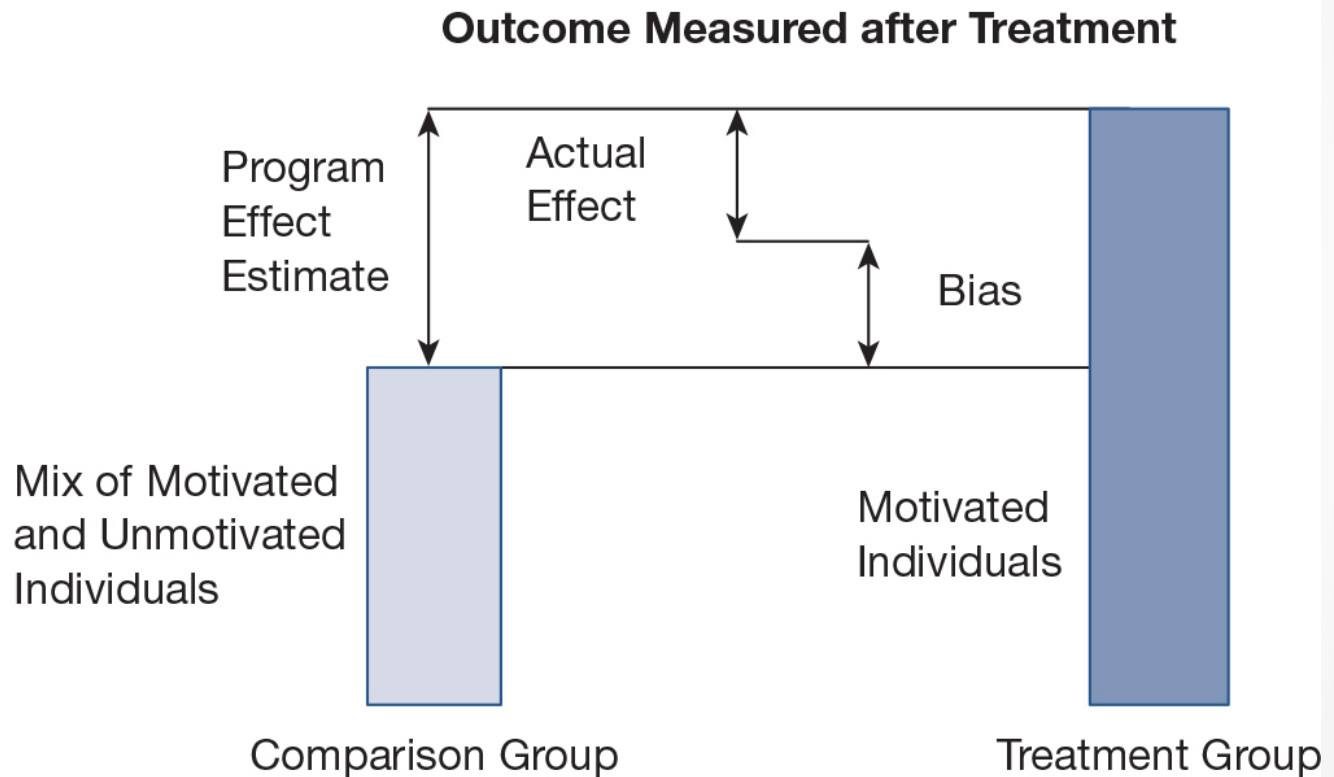


EXHIBIT 7-C

SIMPLE STATISTICAL ADJUSTMENTS IN AN EVALUATION OF THE IMPACT OF A HYPOTHETICAL EMPLOYMENT TRAINING PROGRAM

I. Outcome comparison between men ages 35 to 40 who completed the training program and a sample of men ages 35 to 40 who did not attend the program

	Participants	Nonparticipants
Average wage rate	\$7.75	\$8.20
n	1,000	1,000

II. Comparison after adjusting for educational attainment

	Participants		Nonparticipants	
	Less Than High School	High School	Less Than High School	High School
Average wage rate	\$7.60	\$8.10	\$7.75	\$8.50
n	700	300	400	600

III. Comparison after adjusting for educational attainment and unemployment at the time the program began

	Participants		Nonparticipants			
	Less Than High School	High School	Less Than High School		High School	
	Unemployed	Unemployed	Unemployed	Employed	Unemployed	Employed
Average wage rate	\$7.60	\$8.10	\$7.50	\$7.83	\$8.00	\$8.60
n	700	300	100	300	100	500

EXHIBIT 7-EB

DIAGRAM OF THE APPLICATION OF PROPENSITY SCORE MATCHING TO THE EVALUATION OF THE SAFETY EFFECTS OF SPEED CAMERAS

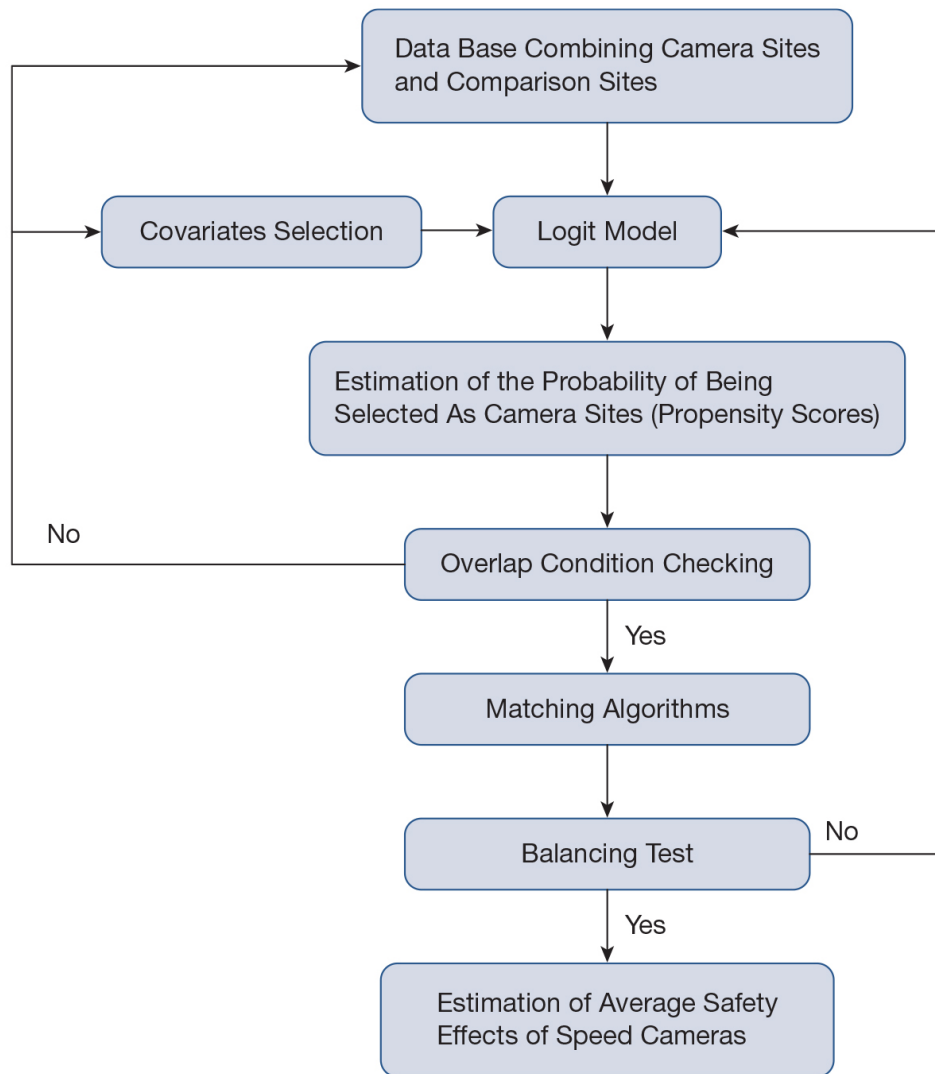


TABLE 7-F1**Adjusted Probabilities Before and After Massachusetts Health Reform**

	Massachusetts		Other New England States		Difference-in-Differences
	2001–2006	2007–2011	2001–2006	2007–2011	
Health status					
General health	66.2	65.5	66.6	64.2	1.7*
Physical health	79.8	80.4	80.1	79.4	1.3*
Mental health	75.1	75.2	75.6	74.2	1.5*
Preventive health care access					
Mammogram	85.3	85.6	83.2	83.6	-0.1
Pap test	93.8	93.3	93.5	90.7	2.3*
Colonoscopy	59.7	71.2	61.8	67.8	5.5*
Cholesterol check	90.7	92.6	90.2	90.7	1.4*
Health care access					
Covered by insurance	94.4	96.8	92.9	91.7	3.6*
Have personal physician	89.7	90.7	88.4	87.8	2.4*
Have cost barriers	5.9	5.8	7.5	9.4	-2.0*

*Statistically significant differences.

Source: Adapted from Van der Wees, Zaslavsky, and Avanian (2013)