

Chapter One

Illustrations

Rossi et. al. Evaluation

EXHIBIT 1-C

MANY CRITERIA MAY BE RELEVANT TO PROGRAM PERFORMANCE

The standards by which program performance may be judged in an evaluation include the following:

The needs or wants of the target population

Stated program goals and objectives

Professional standards

Customary practice; norms for other programs

Legal requirements

Ethical or moral values; social justice, equity

Past performance; historical data

Targets set by program managers

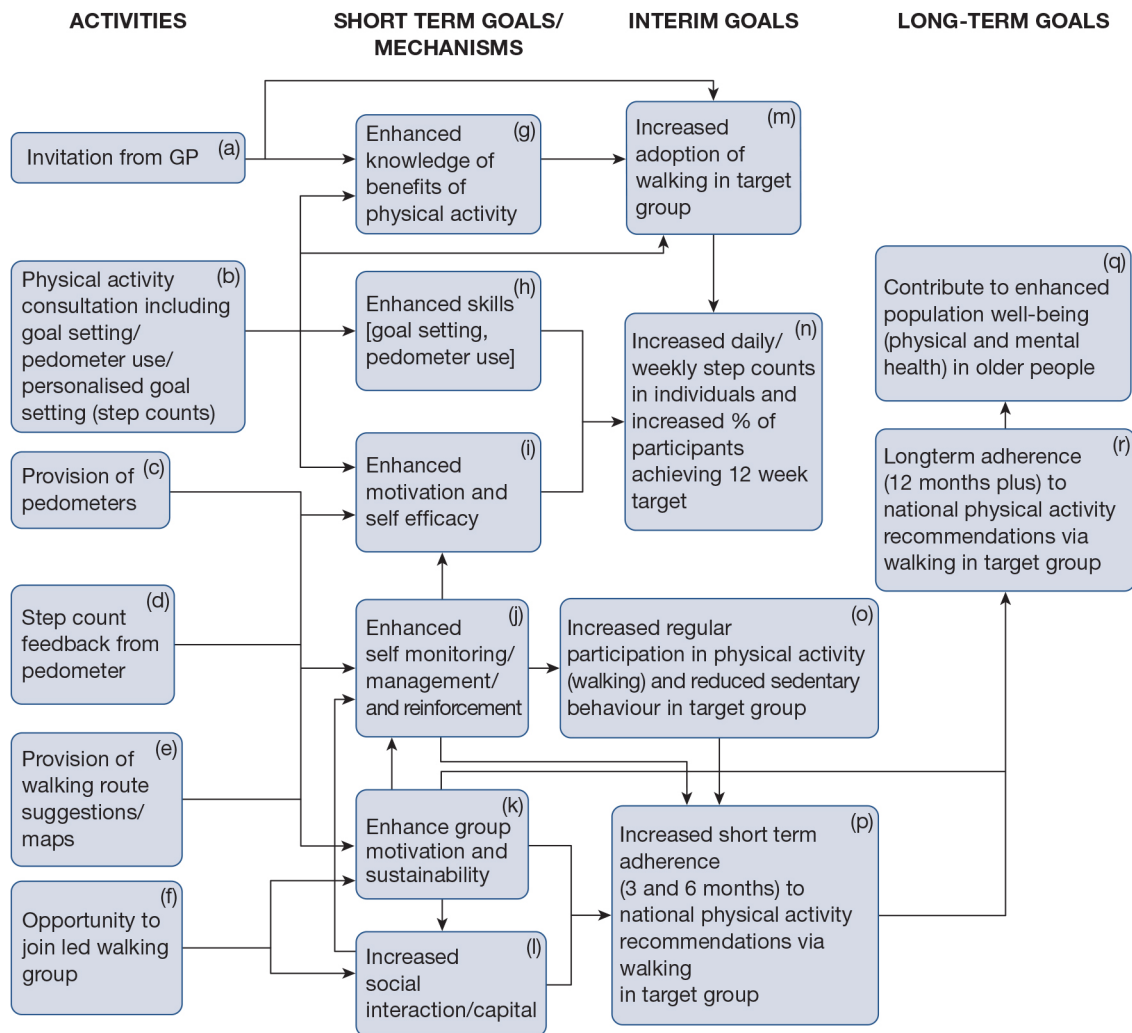
Expert opinion

Preintervention baseline levels for the target population

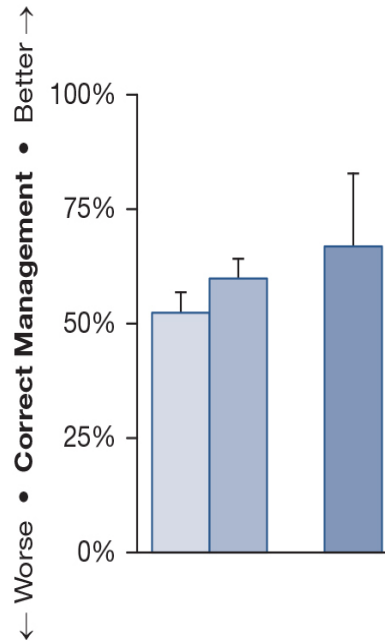
Conditions expected in the absence of the program (counterfactual)

Cost or relative cost

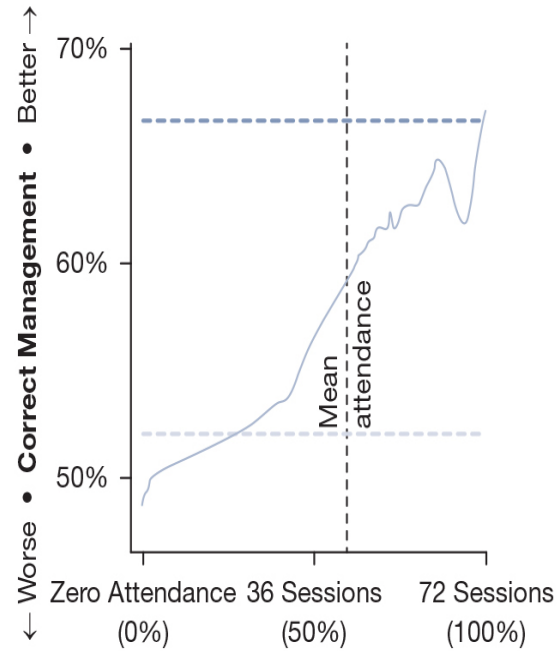
EXHIBIT 1-E Theory for WEW65+ intervention



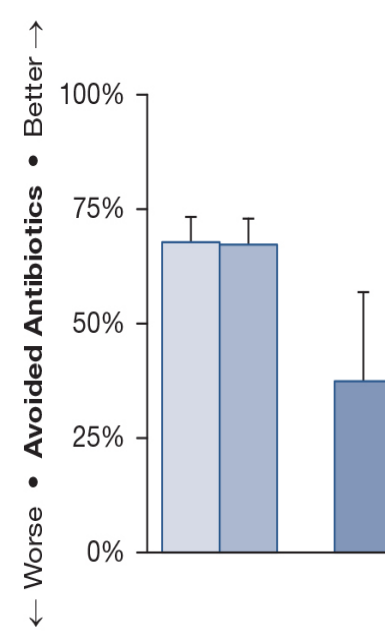
Despite 56% mean attendance, trained informal providers correctly managed more cases, closing half the gap with the public sector.



Providers who completed the full training course correctly managed cases as often as public-sector doctors.



However, training had no impact on the avoidance of unnecessary antibiotics.



Control: Untrained Informal Trained Informal Benchmark: Public Sector

TABLE 1

Results of main analysis: mean costs, number of weeks in employment and QALYs of supported employment and standard care per adult with autism seeking employment, over the time horizon of the analysis (17 months of intervention + 8 years follow-up)

| | Mean total intervention cost over 17 months | Mean total day service cost over 8-year follow-up (incurred by unemployed only) | Mean total cost | Mean number of weeks in employment | Mean number of QALYs |
|------------------------------|---|---|-----------------|------------------------------------|----------------------|
| Supported employment | £5044 | £4193 | £9237 | 136 | 5.42 |
| Standard care (day services) | £2742 | £5893 | £8635 | 102 | 5.31 |
| Difference | £2302 | -£1700 | £602 | 34 | 0.11 |
| Cost-effectiveness | ICER of supported employment versus standard care: £18/extra week in employment; £5600/QALY | | | | |

QALY: quality-adjusted life year; ICER: incremental cost-effectiveness ratio.

Note that numbers have been rounded to the nearest £ (costs), to the nearest integer (weeks in employment) and to the nearest second decimal digit (QALYs).